

Chief's Short Throw Projector Systems offer a variety of extension lengths and precision image alignment for fast installation. Sold separately, Chief's Wall Mounts, Projector Mounts, and Accessories make up a total, state-of-the-art solution to any short throw projector application.

[www.chiefmfg.com](http://www.chiefmfg.com)



# SHORT THROW WALL MOUNTS

## PROJECTOR SOLUTIONS

# SHORT THROW WALL MOUNTS

Chief's Short Throw Wall Mounts provide unparalleled flexibility, precision and strength. Get ideal placement and alignment with exclusive features that provide fast and secure installations.

1. Choose extension based on projector focal length
2. Select an RPA® or RPA Elite® Series Projector Mount
3. Add additional accessories or Chief's whiteboard mount for a complete front projection solution

### OPTIONAL ACCESSORY

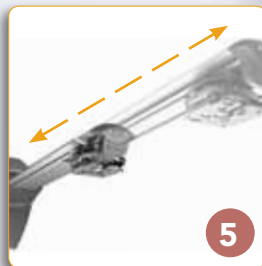
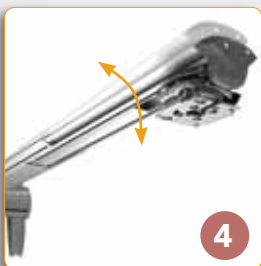
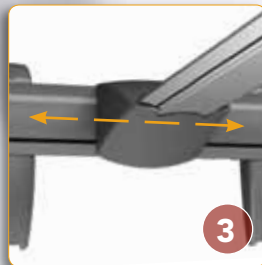


**WMAL24™**  
24" on-center  
wall-plate  
accessory



### FEATURES (WM220AUS shown)

- 1 PROJECTOR OPTIONS**  
Compatible with industry-standard Chief RPA and RPA Elite Series projector mounts
- 2 MULTIPLE OPTIONS**  
Single- and Dual-wall-plate installation options
- 3 LATERAL SHIFT**  
13" (330 mm) post-installation lateral shift with dual-wall-plate version
- 4 PRECISION HEIGHT & LEVELING**  
Industry-first micro height and leveling adjustment,  $\pm 3^\circ$
- 5 VARIABLE EXTENSION**  
Telescoping extension up to 54" (137 cm) on select models
- 6 INTEGRATED CABLE MANAGEMENT**  
Fully internal cable management system conceals and protects cables for a clean finish
- 7 SECURITY OPTIONS**  
Multiple levels of security, including All-Points™ locking hardware, and four projector mount keyed locking options (A/B/C/D)



## WALL MOUNT KITS

Order Chief's Short Throw Wall Mounts separately, or as a kit that includes the silver RPA Elite Mini Universal Projector Mount (RSMAUS):

- WM110AUS™
- WM210AUS™

- WM120AUS™
- WM220AUS™

- WM130AUS™
- WM230AUS™



**WM210AUS**  
Includes WM210S™ and RSMAUS™



**WM220AUS**  
Includes WM220S™ and RSMAUS™



**WM230AUS**  
Includes WM230S™ and RSMAUS™



**WM110AUS**  
Includes WM110S™ and RSMAUS™



**WM120AUS**  
Includes WM120S™ and RSMAUS™



**WM130AUS**  
Includes WM130S™ and RSMAUS™

## SPECIFICATIONS

Model	Extension	Pitch	Lateral Shift	Weight Capacity	Color
WM210AUS Dual Stud Wall Arm	0 - 18" (0 - 457 mm)	±3	10" (254 mm)	25 lbs (11.3 kg)	silver
WM110AUS Single Stud Wall Arm	0 - 18" (0 - 457 mm)	±3	–	25 lbs (11.3 kg)	silver
WM220AUS Dual Stud Wall Arm	18 - 30" (457 - 762 mm)	±3	10" (254 mm)	25 lbs (11.3 kg)	silver
WM120AUS Single Stud Wall Arm	18 - 30" (457 - 762 mm)	±3	–	25 lbs (11.3 kg)	silver
WM230AUS Dual Stud Wall Arm	30 - 54" (76.2 - 137.2 cm)	±3	10" (254 mm)	25 lbs (11.3 kg)	silver
WM130AUS Single Stud Wall Arm	30 - 54" (76.2 - 137.2 cm)	±3	–	25 lbs (11.3 kg)	silver



# MINI PROJECTOR MOUNTS

## SHORT THROW COMPATIBLE SOLUTIONS

### Industry-Leading RPA and RPA Elite Series Projector Mounts

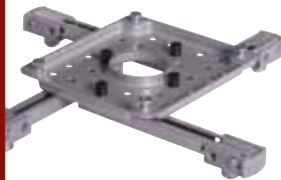
Chief's industry-leading RPA and RPA Elite Series Projector Mounts are packed with features that save time and money on installations.

- Industry-first microadjustable projector mount
- Ships fully assembled with everything you need for installation
- Compatible with a wide array of accessories
- Available in standard, or mini sizes for smaller projector models
  - Weight capacity for standard models: 50 lbs (22.7 kg)
  - Weight capacity for mini sizes: 25 lbs (11.3 kg)



For custom models, visit Chief's MountFinder Pro™ at [www.chiefmfg.com](http://www.chiefmfg.com).

#### NEW UNIVERSAL INTERFACE



RPA and RPA Elite universal interface provides even faster installation and lamp and filter access.

Soon available on all models.



**Step 1**  
attach height-adjustable standoffs to projector



**Step 2**  
latch legs onto standoffs



**Step 3**  
attach interface to legs



**Lamp & filter access**  
unlatch legs to disconnect interface from projector



#### SERVICE EXCELLENCE

Chief products are backed by the best in customer service. Contact any of our Customer Service team members M-F, 7am to 7pm (CST) for assistance.



For more information on these and other products from Chief, the industry leader in AV mounting solutions, visit [www.chiefmfg.com](http://www.chiefmfg.com).

end-user focused

faster installation

superior service

proven quality

#### CHIEF MANUFACTURING

Milestone AV Technologies  
Chief Mounts Canada  
Milestone AV Technologies B.V.  
Milestone AV Technologies Ltd

■ A DIVISION OF MILESTONE AV TECHNOLOGIES ■ [www.chiefmfg.com](http://www.chiefmfg.com)

■ P 800.582.6480 / 952.894.6280 ■ F 877.894.6918 / 952.894.6918 ■ [chief@chiefmfg.com](mailto:chief@chiefmfg.com)

■ P 877.345.4329 ■ F 888.377.5314 ■ [info@chiefmounts.ca](mailto:info@chiefmounts.ca)

■ P +31 40 23 24 700 ■ F +31 40 23 24 710 ■ [europe.chief@milestone.com](mailto:europe.chief@milestone.com)

■ P +852 2145 4099 ■ F +852 2145 4477 ■ [asia.chief@milestone.com](mailto:asia.chief@milestone.com)

©2009 Milestone AV Technologies, a Duchossois Group Company. 900093A\_EMEA 6/09. Chief is a registered trademark of Milestone AV Technologies. All other brand names or marks are used for identification purposes and are trademarks of their respective owners. All patents are protected under existing designations. Other patents pending.