

Chief's Short Throw Projector Systems offer a variety of extension lengths and precision image alignment for fast installation. Sold separately, Chief's Wall Mounts, Projector Mounts, and Accessories make up a total, state-of-the-art solution to any short throw projector application.

www.chiefmfg.com



SHORT THROW WALL MOUNTS

PROJECTOR SOLUTIONS

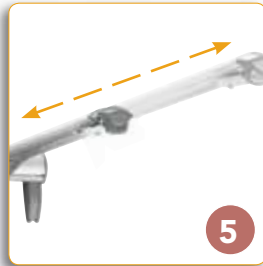
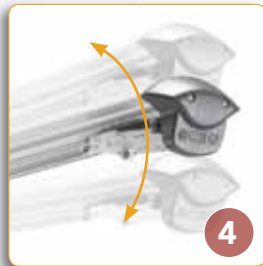
SHORT THROW WALL MOUNTS

Our Short Throw Wall Mounts provide unparalleled flexibility, precision and strength. Get ideal placement and alignment with exclusive features that provide fast and secure installations.

1. Choose extension based on projector focal length
2. Select an RPA® or RPA Elite® Series Projector Mount
3. Add additional accessories or our whiteboard mount for a complete front projection solution



FEATURES (WM230AUS shown)



- 1 PROJECTOR OPTIONS**
Compatible with industry-standard RPA and RPA Elite Series projector mounts
- 2 MULTIPLE OPTIONS**
Single- and dual-stud installation options
- 3 LATERAL SHIFT**
13" (330 mm) post-installation lateral shift with dual-stud version
- 4 PRECISION HEIGHT & LEVELING**
Industry-first micro height and leveling adjustment, $\pm 3^\circ$
- 5 VARIABLE EXTENSION**
Telescoping extension up to 54" (137 cm) on select models
- 6 INTEGRATED CABLE MANAGEMENT**
Fully internal cable management system conceals and protects cables for a clean finish
- 7 SECURITY OPTIONS**
Multiple levels of security, including All-Points™ locking hardware, and four projector mount keyed locking options (A/B/C/D)

OPTIONAL ACCESSORY

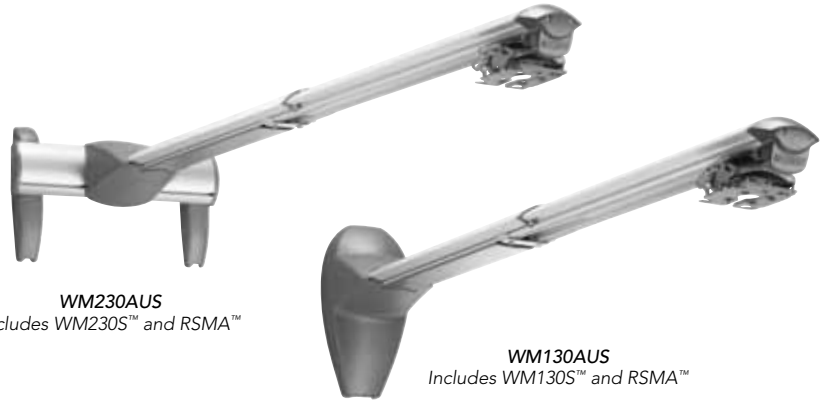


WMAL24™
24" on-center
stud accessory

WALL MOUNT KITS

Order Short Throw Wall Mounts separately, or as a kit that includes the silver RPA Elite Mini Universal Projector Mount (RSMAUS):

- WM210AUS™
- WM220AUS™
- WM230AUS™
- WM110AUS™
- WM120AUS™
- WM130AUS™



WM230AUS
Includes WM230S™ and RSMA™

WM130AUS
Includes WM130S™ and RSMA™

SPECIFICATIONS

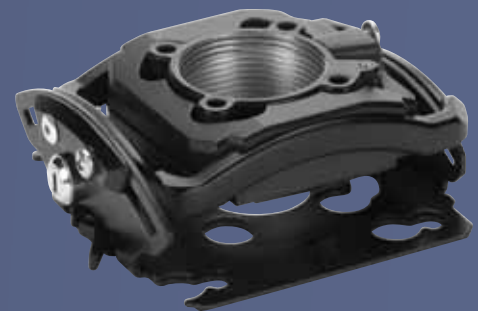
| Model | Extension | Pitch | Lateral Shift | Weight Capacity | Color |
|---------------------------------|-------------------------------|-------|-----------------|---------------------|--------|
| WM210S™ Dual Stud Wall Arm | 0 - 18" (0 - 457 mm) | ±3 | 13" (330 mm) | 50 lbs (22.7 kg) | silver |
| WM110S™ Single Stud Wall Arm | 0 - 18" (0 - 457 mm) | ±3 | – | 50 lbs (22.7 kg) | silver |
| WM220S™ Dual Stud Wall Arm | 18 - 30" (457 - 762 mm) | ±3 | 13" (330 mm) | 25 lbs (11.3 kg) | silver |
| WM120S™ Single Stud Wall Arm | 18 - 30" (457 - 762 mm) | ±3 | – | 25 lbs (11.3 kg) | silver |
| WM230S Dual Stud Wall Arm | 30 - 54" (76.2 - 137.2 cm) | ±3 | 13" (330 mm) | 25 lbs (11.3 kg) | silver |
| WM130S Single Stud Wall Arm | 30 - 54" (76.2 - 137.2 cm) | ±3 | – | 25 lbs (11.3 kg) | silver |

Industry-Leading Projector Mounts

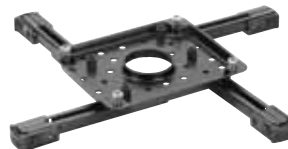
Our RPA and RPA Elite Series Projector Mounts are packed with features that save time and money on installations.

- Industry-first microadjustable projector mount
- Ships fully assembled with everything you need for installation
- Compatible with a wide array of accessories
- Available in standard or mini sizes for smaller projector models
 - Weight capacity for standard models: 50 lbs (22.7 kg)
 - Weight capacity for mini models: 25 lbs (11.3 kg)

For custom models, visit Chief's MountFinder Pro™ at www.chiefmfg.com.



NEW UNIVERSAL INTERFACE



RPA and RPA Elite universal interface provides even faster installation and lamp and filter access.



SHORT THROW WALL MOUNTS

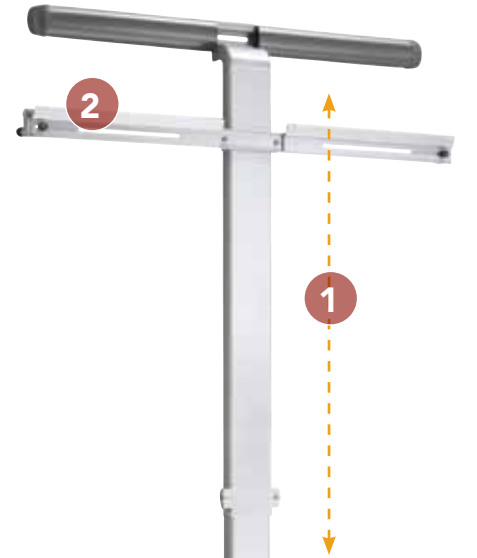
PROJECTOR SOLUTIONS

INTERACTIVE WHITEBOARD MOUNT – WBMUS

MAXIMUM BOARD WEIGHT: 75 lbs (34 kg)

Easily install white boards over chalkboards with our new white board mounting solution. With a vertical adjustment of 30" (762 mm), the mount fits securely over the top of existing boards that are 3 - 5' (0.9 - 1.5 m) tall. Optional installation methods give you the choice to install either in-front of or on-top of existing chalk/marker trays.

- 1** 30" (76.2 cm) overall vertical adjustment to mount over the top of existing boards that are 3 - 5' (0.9 - 1.5 m) tall
- 2** Height-adjustable and expandable hanger bracket provide vertical security and precision whiteboard placement even for extra wide boards
- 3** Height and depth-adjustable bottom support brackets secure the bottom of white boards



- Installs onto wood or steel studs/brick/ block
- Two possible configurations:
 - 1) In-front of existing chalk/marker trays - 4.63" (117 mm) clearance behind mount
 - 2) Low profile, on-top of existing chalk/marker trays - 1.63" (41.4 mm) depth from wall



SERVICE EXCELLENCE

Our products are backed by the best in customer service. Contact any of our Customer Service team members M-F, 7am to 7pm (CST) for assistance.



For more information on these and other products from Chief, the industry leader in AV mounting solutions, visit www.chiefmfg.com.

CHIEF ■ A DIVISION OF MILESTONE AV TECHNOLOGIES ■ www.chiefmfg.com
 USA ■ P 800.582.6480 / +1.952.894.6280 ■ F 877.894.6918 / +1.952.894.6918 ■ chief@chiefmfg.com
 Canada ■ P 877.345.4329 ■ F 888.377.5314 ■ info@chiefmounts.ca
 EMEA ■ P +31 40 23 24 700 ■ F +31 40 23 24 710 ■ europe.chief@milestone.com
 Asia Pacific ■ P +852 2145 4099 ■ F +852 2145 4477 ■ asia.chief@milestone.com