

Chief's state-of-the-art Automated Projector and TV mounts combine top-quality mounting solutions with fully motorized remote operation. These mounts offer programmable viewing angles and fast, fine-tuned adjustments.

**Are you a Chief Certified Partner?**  
Register at [www.chiefmfg.com/certification](http://www.chiefmfg.com/certification).

[www.chiefmfg.com](http://www.chiefmfg.com)

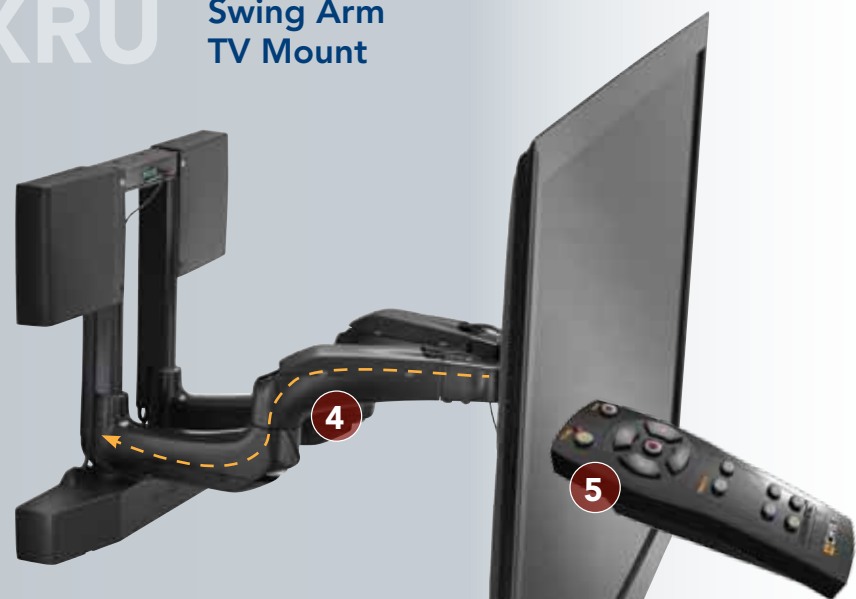


# MONITORS IN MOTION

## Introducing Chief's New Automated Swing Arm Wall Mount

Chief is powering up one of our most popular swing arm solutions. The all-new PXRU automated mount includes all of the functionality of the PNRU swing arm mount, in a fully automated version with a programmable remote control.

### PXRU Swing Arm TV Mount



#### PXRU FEATURES

- 1 LOW PROFILE**  
Collapses to 4.46" (113 mm), concealing the mount behind the screen
- 2 EXTENDS UP TO 27" (685 mm)**  
Full extension maximizes viewing potential
- 3 SMOOTH TILT & SWIVEL**  
Provides up to 90° of swivel and up to 12° of tilt for optimal viewing
- 4 CABLETRAC™ SYSTEM**  
Channeled cable management provides quick and easy cable routing
- 5 IR REMOTE**  
Includes 4 programmable preset buttons



#### OPTIONAL ACCESSORY



**PAC502**  
In-Wall Box for  
No-Profile  
Installations

## SL220 New Suspended Ceiling Projector Lift

#### DROP-IN DESIGN

Designed to fit 2' x 2' (600 mm x 600 mm) suspended ceiling systems.

#### EASY 3-STEP INSTALLATION

Installs up to 10X faster than conventional lifts: Suspend frame with WireVice™ cables, snap housing into frame and attach the cradle.

#### ONE-PERSON INSTALL

Made of lightweight aircraft-grade aluminum. The SL220 can be installed by one person using a ladder – no floor lift required.

#### QUIET OPERATION

Moves projector into show or concealed position quickly and quietly.



#### ADDITIONAL AUTOMATED SOLUTIONS

Chief's automated projector lifts provide smooth and quiet lift technology for concealed installations. These models are fully enclosed and offer either 8.5" (216 mm) or 36" (914 mm) of extension.

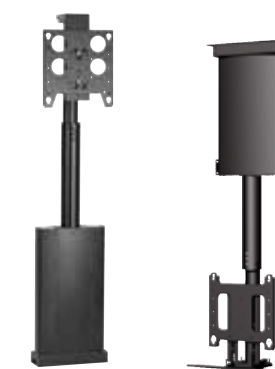
Get quiet, smooth extension with Chief's automated flat panel lifts to conceal displays while not in use.



**SL151**  
Now fits into 2' x 2' (600 x 600 mm) ceiling tile  
Up to 8.5" (216 mm) of extension



**SL236**  
Up to 36" (914 mm) of extension



**CM2C40U / CM2L40U**  
Automated TV Lifts



## AUTOMATED SOLUTIONS

### FLAT PANEL & PROJECTOR MOUNTS

#### SPECIFICATIONS

Model	TV Size Range	Depth from Wall	Extension	Swivel	Tilt*	Max Mounting Pattern (H,W)	Weight Capacity
<b>TV Mounts</b>							
PXRU	32 - 65"	4.5" (114 mm)	27" (685 mm)	L: 45° R: 45°	U: 0° D: 12°	H: 17.75" (450 mm), W: 27.6" (700 mm)	150 lbs (68 kg)
CM2C40U	32 - 61"	-	31 - 71" (79 - 180 cm)	-	-	H: 20.37" (517 mm), W: 39.93" (101.4 cm)	190 lbs (86.2 kg)
CM2L40U	32 - 61"	-	31 - 71" (79 - 180 cm)	-	-	H: 20.37" (517 mm), W: 39.93" (101.4 cm)	190 lbs (86.2 kg)

\*Varies with screen height.

Model	Extension	Max Projector Size (HxWxD)	Ceiling Opening (HxWxD)	Ceiling Closure (WxD)	Roll/Pitch/Yaw	Weight Capacity	Color
<b>Projector Mounts</b>							
SL151	8.5" (216 mm)	8.38 x 18 x 18.25" (213 x 457 x 464 mm)	11.25 x 23 x 22.75" (286 x 584 x 578 mm)	20.25 x 20.25" (514 x 514 mm)	±2°, ±20°, ±5°	35 lbs (15.9 kg)	White
SL220	8.5" (216 mm)	9.5 x 16.5 x 18.5" (241 x 419 x 470 mm)	11.52 x 24 x 24" (293 x 600 x 600 mm)	23.31 x 23.31" (592 x 592 mm)	varies	30 lbs (13.6 kg)	White
SL236	36" (914 mm)	9.25 x 20.5 x 22.75" (279 x 635 x 698 mm)	25.5 x 28" (41 x 710 mm)	24 x 24" (610 x 610 mm)	±2°, ±15°, ±5°	35 lbs (15.9 kg)	White

#### CHIEF

Milestone AV Technologies  
Chief Mounts Canada

Milestone AV Technologies B.V.

Milestone AV Technologies Ltd

■ A DIVISION OF MILESTONE AV TECHNOLOGIES ■ [www.chiefmfg.com](http://www.chiefmfg.com)

■ P 800.582.6480/952.894.6280 ■ F 877.894.6918/952.894.6918 ■ [chief@chiefmfg.com](mailto:chief@chiefmfg.com)

■ P 877.345.4329 ■ F 888.377.5314 ■ [info@chiefmounts.ca](mailto:info@chiefmounts.ca)

■ P +31 40 23 24 700 ■ F +31 40 23 24 710 ■ [europe.chief@milestone.com](mailto:europe.chief@milestone.com)

■ P +852 2145 4099 ■ F +852 2145 4477 ■ [asia.chief@milestone.com](mailto:asia.chief@milestone.com)

©2011 Milestone AV Technologies, a Duchossois Group Company. 900145C 12/11. Chief is a registered trademark of Milestone AV Technologies. All other brand names or marks are used for identification purposes and are trademarks of their respective owners. All patents are protected under existing designations. Other patents pending.